

# Connected Health Research in Northern Ireland



Nanotechnology and  
Integrated Bioengineering  
Centre



# Connected Health Research in Northern Ireland

- European Connected Health Alliance – Northern Ireland Connected Health-ECO (NICH-ECO)
- University of Ulster
  - NIBEC - CHIC based at NIBEC
  - SERG
- Queens University Belfast
  - ECIT, Chemistry and Medicine
- CITRIC
- Trusts
  - All – mainly at Ulster, RVH, and Craigavon
- Industry
  - Companies like BT (NI), Intelesens, Randox etc.

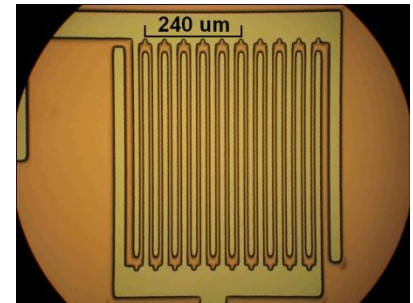
# Technology Transfer at NIBEC

- Patents
  - 35 patents : Wide range in the area of Medical Devices and Technologies
- IPR
  - Heartsine, Heartscape, Intelesens, Laboratories Fournier, Maersk Medical, Tyco
- Spin Outs
  - Heartsine, Heartscape, Intelesens
- Spin-in
  - Sisaf



# Connected Health Themes at Ulster

- **Wireless Vital Signs Monitoring**
- **Point of Care Diagnostics Systems**
- **Sensor Technology**
- **M-Health**
- **Ambient Assisted Living**
- **Clinical Trialing**
- **Economic Assessment and Valuation**
- **Technology Transfer...spin outs and licensing**
- **Personalized Medicine (BSRI)**
- **CTRIC and UUM (ISRC)**



# CH Capability

3. Innovation

- Plasma Technology
- Microfluidics
- Microfabrication
- Nanofabrication
- Surface Analysis
- Microscopy
- Chemical Analysis

**MEMS and Nanodevices**

**Smart Diagnostic Devices**

- Telemetry: Bluetooth, Wi-Fi and Proprietary RF
- Electronics
- Embedded Systems
- Pattern Recognition

**Smart Systems**

**Connected Health Solutions**

**Nanosensors**  
ECG, EMG, EEG, Temp, Resp. Rate, SpO2, PWV, Biosensors, E Nose

- Electrode Fabrication and Characterisation
- Carbon Nanotube & Graphene Growth
- Nanoparticles

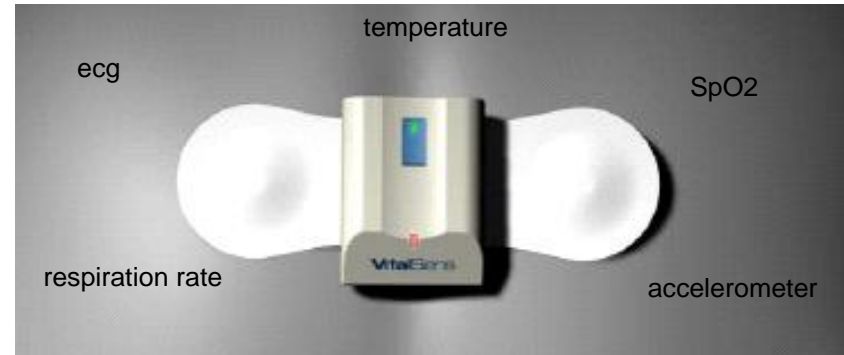
**Fully Integrated systems for Chronic Health; Lifestyle and Pharma Monitoring**

- M Health
- Clinical Trials
- Adoption Models
- Economic Assessment
- Spin Outs

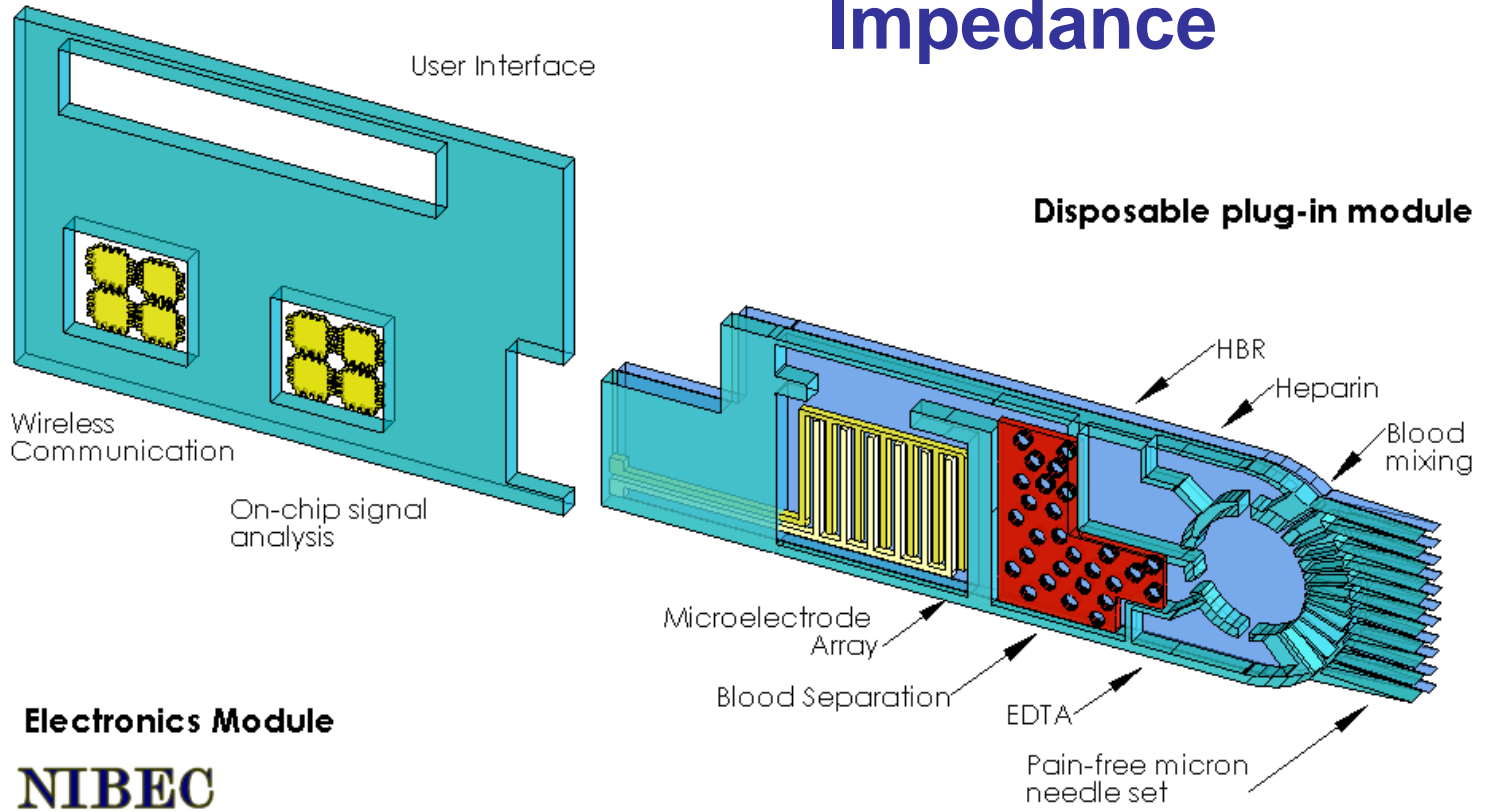
# Wireless Vital Signs Platforms

- Intelesens has developed its platform as the basis of OEM products
- Short range or cellular telemetry
- Range of vital signs possible
  - Respiration
  - Blood oxygen (late 2007)
  - Temperature
  - Motion, activity and falls
  - Cardiac output
  - ECG
- Compact, light, easy to wear

### 3. Innovation



# The NIBEC POC Cardiac Enzyme Impedance



# Infrastructure

- SMART HOME & SMART WARD
- SMART Doctors Surgery
- SERG : Ambient Assisted Living
- Data Analysis/DSP/Labview Project Laboratories
- Patient Testing Laboratories
- NIBEC: Nanotechnology, Microfluidics; Cell- /Micro-Biology Laboratories; Microfabrication Cleanrooms
- Terrace House and Playing Field Testing
- Plans for new Innovation Centre (Manufacturing)...Rapid Prototyping







UNIVERSITY OF  
BIRMINGHAM

**Brunel**  
UNIVERSITY  
WEST LONDON



The University of  
Nottingham

**KING'S**  
College  
LONDON  
University of London



Events

Sitemap

Contacts

Login / Register

*A major EPSRC funded national centre*

## RESEARCH THEMES

- [Theme A: Decision Frameworks and Tools for Industry](#)
- [Theme B: Economics of Safety](#)
- [Theme C: Bayesian Framework research](#)
- [Theme D: User Requirements Studies](#)
- [Theme E: Value Procurement in NHS](#)
- [Theme F: Assessment Methods for New and Emerging Healthcare Technologies](#)



Computer Science Research Institute  
Smart Environments Research Group





Situated within the School of Computing and Mathematics on the Jordanstown Campus the SERG facilities is comprised of a number of dedicated research working spaces along with newly refurbished smart environments.

SERG has a vision of:  
*"Through an integrated and multidisciplinary approach advance research to support and monitor people within their home and beyond."*

The Group's strategy is strongly aligned with local, national and European initiatives in the development of technologies for independent living in an ageing society.



SERG SmartEnv\_ResearchGrp  
**SERG\_Ulster**

Brussels Spotlight on Connected Health - An international initiative headed by a University of Ulster research phys...  
<http://ow.ly/1dKz3>  
 yesterday • reply • retweet • favorite

Sonja attends the MATCH Conference in Nottingham today  
 2 days ago • reply • retweet • favorite

SERG attends STAR Project Consortium meeting in Florence today  
 3 days ago • reply • retweet • favorite

Luke attended the "How to access funding and find partners for collaborative technology and R&D projects" event today  
<http://t.co/3InzYn>  
 3 days ago • reply • retweet • favorite

Eunju Kim, from the University of Florida, is working with us, in our labs, for the next couple of months  
 4 days ago • reply • retweet • favorite

[www.serg.ulster.ac.uk](http://www.serg.ulster.ac.uk)  
 @SERG\_Ulster



# Clinical Research Areas

Clinical Domain	Areas of Research	Clinical Partner
<i>Cardiology</i>	12-lead ECG analysis, body surface potential mapping and smart garments	Royal Victoria Hospital Erasmus Medical Centre Cardiovascular Research Institute (Utah)
<i>Dementia</i>	Technologies to support remembering, social contact, activities of pleasure and safety.	Belfast City Hospital Alzheimer's Society (Northern Ireland) Northern Trust University of Sterling
<i>Ageing</i>	Technologies to support independent living	Belfast City Hospital Northern Trust
<i>EEG Analysis</i>	ABR processing	Cedar Foundation
<i>Parkinson's Disease</i>	Monitoring of tremors	Belfast City Hospital Parkinson's Walk in Clinic
<i>Chronic Pain, Stroke and CHF</i>	Home based self reporting and self-management	Bath Pain Management Unit Sheffield University



European Connected Health Alliance

*Delivering leadership for the development of Connected and MHealth markets and practice across Europe*





Members include...



# ECO (NICH-ECO) Launch





**ECIT** | The Institute of Electronics,  
Communications and  
Information Technology

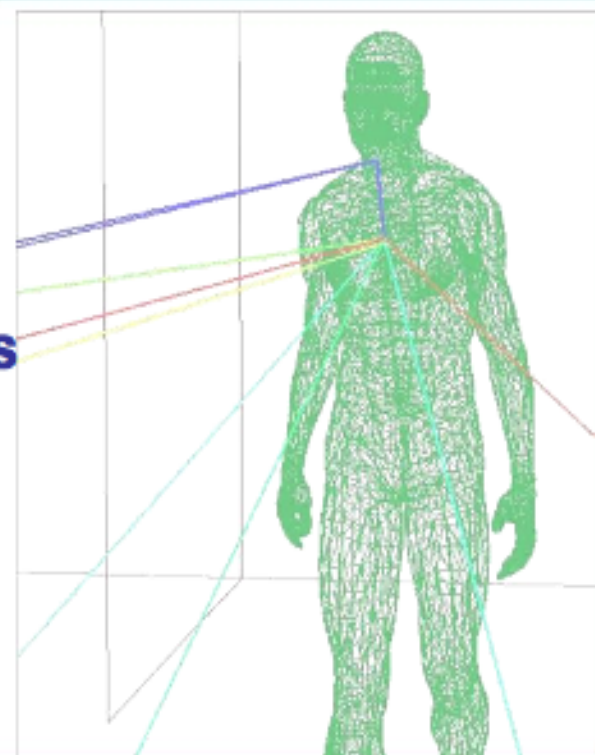


Queen's University  
Belfast

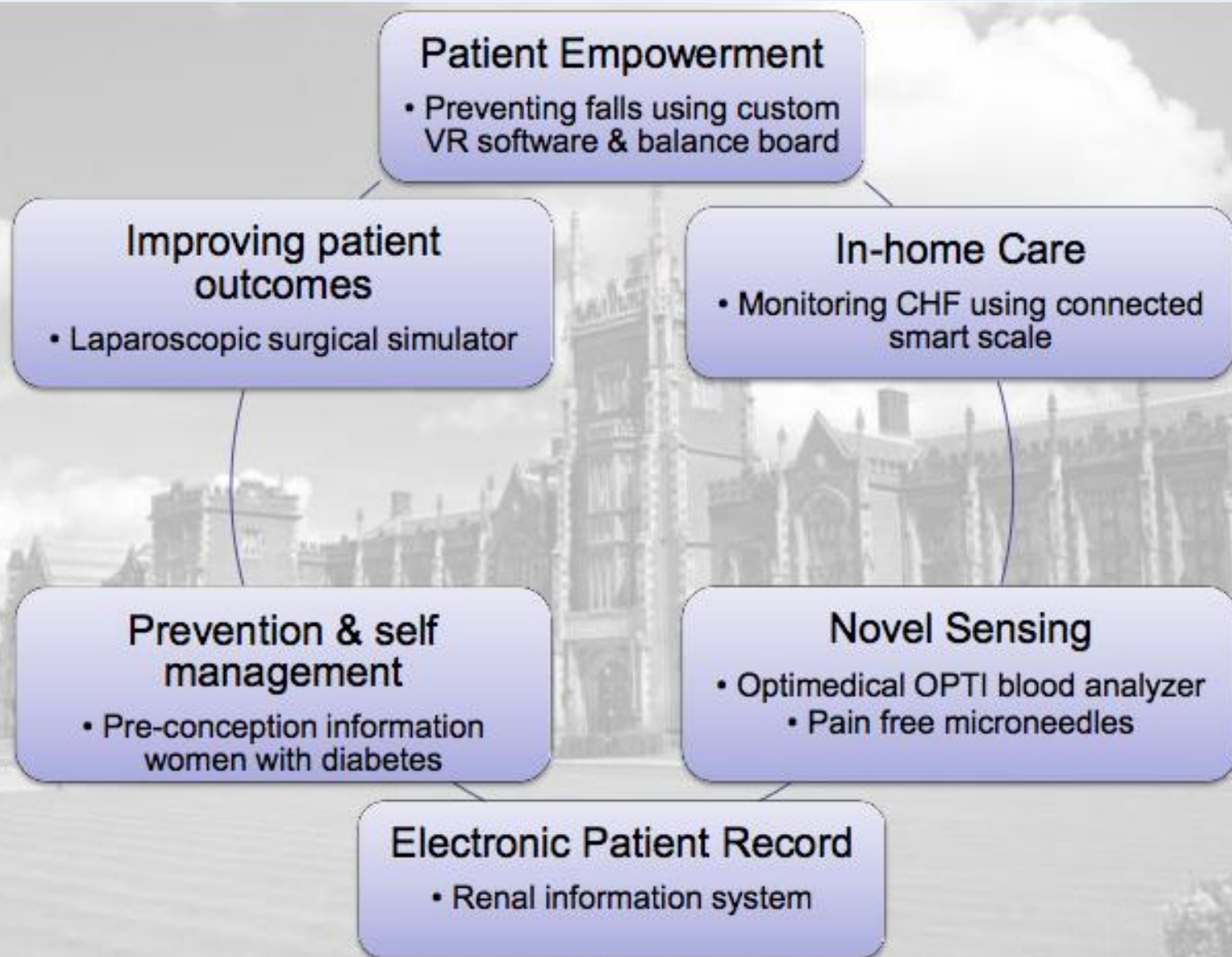
## Connected Health @ Queen's

**Professor William G. Scanlon**  
**Director of Research, Digital Communications**

**w.scanlon@qub.ac.uk**  
**www.ee.qub.ac.uk/wireless/**







# Connected Health in Northern Ireland

## Industry led research with global relevance

### What is it?

CHIC is an **Industry-led** group which is focused on collaborative research to support the growth of the connected health market. Funding is largely from state aid.

### Emerging Focus Areas

1. **Integrated community care** – joining together existing and new technology and process.
2. **Point of Care Diagnostics** – moving diagnostics closer to the patient.
3. **Vital Signs monitors** - technology development to support sign identification, analysis and communication.



# Connected Health Competence Centre

*Industry led and academia inspired.*

**Stephen McComb,**

Technology Leader from Industry.  
Background in telecoms, supply chain,  
health service reform, health IT  
Implementation and Lean management  
consultancy.

**Prof Jim  
McLaughlin:  
(Physicist)**  
Medical  
Sensors; Micro  
and  
nanodevices;

**Prof. Chris  
Nugent:**

Computing  
Science/Intellig  
ent Algorithms  
and Connected  
Health



**Steering Group**  
*Start, Stop, Continue*  
*Currently shadow board*

# Gathering Interest

## *Identifying the companies to work with*

Yarra, Sectra, Oracle, EMC, Crafty Devil, CIGA Healthcare, Stredia , Independent Health Care Providers, HP, S3, I-Innovations, Amtec Medical, Radox, Finger print Learning, Fold, Scientific Medical Clinical (SMC) Ltd, Domestic Care NI, Andor, BT, Northgate, Microsoft, Almac, Fortress Diagnostics, Intelesens, Core Systems, Accenture, Prime care NI, 3fivetwo Healthcare, Astute Labs, Tyco Health care Uk, Rumble Labs, Vertical Structures, Sensor Mind, Galen, Kainos, Connected Health NI, Task, Isoft, Heartsine, 3M, NI Housing Executive, Meadows, Biancamed, Extra-Care, Balmoral Healthcare, Ann's Home Care, Care Link /Manor Health Care, Northern Ireland Institute for the Disabled, Medevol Clinical Services, Crucible Pictures , Redburn Information Services and Burke Consulting.

**50+  
Companies  
contacted**

**Estimated  
to be  
another 50+  
companies**

# Strong Connected Health Interest

A sample of the types of potential organisations

NI Connected Health Innovation Centre (CHIC)



GE Healthcare

